

A.E. Konkabayeva\*, A.S. Erubay, E. Gaibel

*Karagandy University of the name of academician E.A. Buketov, Karaganda, Kazakhstan*

*\*Corresponding author: aiman54@mail.ru*

### **Hematological parameters in rats poisoned with cadmium nitrate and in biocorrection with the infusion of *Beta vulgaris* seeds**

Nowadays, using plant extracts and infusions as protectors against the impact of heavy metals, the molecular mechanisms, protective and adaptive reactions of plants are studied. The purpose of this article was to study the protective properties of beetroot seeds infusion in acute and sub-acute poisoning of rats with cadmium nitrate. For this experiment, we used 50 male rats. The animals were exposed to Cd nitrate, with an initial weight of  $180 \pm 30$  g. The first groups of rats were injected with cadmium nitrate at a dose of 0.1 g/L intraperitoneally, the second groups received a 0.01 % solution of cadmium nitrate, 1 mL, 5 days a week, orally for 10 and 24 days. General blood tests and biochemical parameters in rats were investigated. By biochemical parameters, we determined liver enzymes alanine aminotransferase (ALT), aspartate aminotransferase (AST), bilirubin, glucose, urea, creatinine, and total protein. The mean  $\pm$  SEM values were calculated for each group to determine the significance of the intergroup difference. Each parameter was analyzed separately using the one-way analysis of variance (ANOVA) test. To determine the difference between groups, Student's «t»-test was used. Studies showed the presence of variations in the parameters of leukocytes, erythrocytes and platelets depending on the period of days of poisoning and biocorrection. There were small changes in the content of urea, creatinine, and protein, which were not reliably confirmed. As a result, our research allowed asserting that the use of *Beta vulgaris* infusion in acute and subacute experiments with poisoning of animals with cadmium nitrate had a positive hepatoprotective effect.

*Keywords:* cadmium nitrate, infusion of *Beta vulgaris* seeds, hematological parameters, biochemical analysis, bio correction.

#### *Introduction*

Heavy metals have not been a problem as long as they are components of our environment at a balanced level, but human activities towards modern life and industrialization have increased the distribution of heavy metals and their bioavailability [1]. Industrial waste and wastewater manufacture, mining and metallurgy, energy and fuel production, vehicle emissions and agricultural fertilization are some of the most important human activities leading to increased environmental pollution by heavy metals [2].

Cadmium is one of the most toxic heavy metals, the availability and biological concentrations of which have increased in recent decades due to various types of human activities [3]. Chronic exposure to cadmium can have side effects such as lung cancer, lung adenocarcinomas, proliferative lesions of the prostate, bone fractures, kidney dysfunction and hypertension [4]. Cadmium is a heavy metal, belongs to the second class of hazard, and has a pronounced tendency to accumulate in the body. Cadmium poisoning occurs when it enters the stomach or by inhalation. The absorbed cadmium accumulates in the liver and kidneys as a complex with metallothionein. In erythrocytes and soft tissues, cadmium binds to  $\alpha$ 2-macroglobulin and albumin. Cadmium binds to sulfhydryl groups of proteins, which leads to inactivation of enzymes; inhibits the activity of mitochondria, increases free radical oxidation in cells. With further development of intoxication, there are nosebleeds, ulcers and perforations of the nasal septum, and other complications, chronic obstructive pulmo-

nary diseases with the development of progressive pneumosclerosis and emphysema, gastrointestinal disorders, liver damage. From the side of the blood, hypochromic anemia or compensatory erythrocytosis are observed [5].

The most commonly used therapeutic strategy for heavy metal poisoning is chelation therapy to promote metal excretion. However, chelators for Cd and Pb toxicity are themselves reported to have a number of different safety and efficacy concerns. None of the chelation therapies for Cd toxicity has yet been approved for clinical use thus far [6].

Many studies in both animals and humans have shown that a deficiency in essential metals such as zinc, calcium or iron can lead to greater absorption and toxicity of Cd and Pb [7–9]. Therefore, it is logical to suggest that the supplementation with essential metals can provide protective effects against Cd and Pb intoxication.

Particular interest at present is the use of plant extracts and infusions as protectors when exposed to heavy metals, the molecular mechanisms underlying the capture and transport of elements, as well as the protective and adaptive reactions of plants are widely studied [10]. Edible plant supplements can not only increase the level of vitamins and essential metals in the human body, but also reduce the risks of Cd toxicity. In connection with the above, the purpose of our research was to study the protective properties of common beetroot seed infusion during acute and sub-acute poisoning of rats with cadmium nitrate.

### *Materials and methods*

#### *Preparation of infusion of Beta vulgaris seeds*

Seeds for research were obtained from the collection of Michurin agricultural town and were identified by the experts of the Department of Botany of the Faculty of Biology and Geography of E.A. Buketov Karaganda University. 3.5 g of dried seeds were taken; they were infused in 200 mL of water at a temperature of 80–90 °C for 1 hour and filtered. Then the freshly prepared filtrate was used in the study for five hours.

#### *Animals and tissue preparation*

This research complied with the ethical principles outlined in the European Community Directive (86/609EC) and the requirements of the World Animal Protection (WSPA).

In the experiment, a total of 50 male non-linear rats were used. The rats were housed five per cage and had free access to food and water. They were exposed to a 14–10-h light-dark cycle, the room temperature was controlled at  $22 \pm 3$  °C. Rats were poisoned with Cd nitrate, which was administered in some animals at a dose of 0.1 g/L single intraperitoneally, other animals obtained 0.01 % 1 mL cadmium nitrate solution 5 days a week orally for 24 days — daily to each animal per orally. Animals were exposed to Cd nitrate when they weighed  $180 \pm 30$  g. Experiments were performed during 10 and 24 days. The 50 non-linear rats were divided into five groups according to:

G1: Rats exposed to Cd (in the form of Cd nitrate), 1 mL per rat single intraperitoneal dose of 0.1 g/L.

G2: This group received Cd nitrate 1 mL per rat single intraperitoneal dose of 0.1 g/L + seeds infusion (3.6 mL per rat during first 5 hours of the light part of the day) for 10 days.

G3: Rats exposed to Cd (in the form of Cd nitrate), 1 mL per rat for 24 days.

G4: This group received Cd nitrate (1 mL per rat) + seeds infusion (3.6 mL per rat during first 5 hours of the light part of the day) for 24 days.

G5: Rats ( $n = 10$ ) received water during 24 days.

Animals were sacrificed by decapitation under ether anesthesia.

At the same time, rat blood was collected for hematological and biochemical analysis. Blood analysis was determined on an automatic hematology analyzer KX-21 Sysmex (Japan). The liver enzymes ALT, AST, bilirubin, glucose, urea, creatinine and total protein were determined in blood serum samples on the automatic biochemical analyzer A-25 Biosystems (Spain).

#### *Statistics*

The mean  $\pm$  SEM values were calculated for each group to determine the significance of the intergroup difference. Each parameter was analyzed separately using the one-way analysis of variance (ANOVA) test. To determine the difference between groups, Student's «t»-test was used.  $P < 0.05$  were considered to be significant.

### Results and discussion

The parameters of the general blood analysis of rats poisoned with cadmium nitrate and in bio correction of beetroot seeds are shown in Table 1. Studies have shown the presence of variations in the indicators of white blood cells, red blood cells and platelets depending on the period of days of poisoning and bio correction.

Thus, a comparison of the results obtained in the groups of animals with acute poisoning with cadmium nitrate (group 1) and poisoning with subsequent bio correction (group 2) revealed that the content of white blood cells after bio correction with beetroot seed infusion significantly ( $P \leq 0.05$ ) increased in comparison with the control and the result of the first groups (Table 1).

Table 1

**General blood analysis of rats after acute and sub-acute poisoning with cadmium nitrate and bio correction with beet seeds infusion**

Parameters	Acute poisoning 1 day, autopsy by day 10 (group 1)	Acute poisoning followed by 10 days of bio correction with infusion of <i>Beta vulgaris</i> seeds (group 2)	24 days of poisoning (group 3)	24 days of poisoning with bio correction with infusion of <i>Beta vulgaris</i> seeds (group 4)	Control (group 5)
WBC $\times 10^9/L$	4.04 $\pm$ 0.95*	7.0 $\pm$ 0.1*	6.000 $\pm$ 1.280	6.425 $\pm$ 0.638	7.6 $\pm$ 1.860*
RBC $\times 10^{12}/L$	3.20 $\pm$ 0.13*	4.9 $\pm$ 0.23*	4.075 $\pm$ 0.444	4.460 $\pm$ 0.063	5.190 $\pm$ 0.107*
HGB g/L	109.40 $\pm$ 2.40	109.7 $\pm$ 2.67	108.000 $\pm$ 4.400	108.400 $\pm$ 3.267	113.000 $\pm$ 2.000
HCT L/L	0.19 $\pm$ 0.001*	0.3 $\pm$ 0.01*	0.247 $\pm$ 0.017	0.249 $\pm$ 0.005	0.296 $\pm$ 0.003
MCV fL	59.50 $\pm$ 1.33	57.2 $\pm$ 0.75	55.933 $\pm$ 1.067	56.800 $\pm$ 1.100	57.100 $\pm$ 0.667
MCH pg	34.34 $\pm$ 2.03*	22.7 $\pm$ 0.52	24.533 $\pm$ 1.433	23.660 $\pm$ 1.007	21.850 $\pm$ 0.833*
MCHC g/L	576.60 $\pm$ 21.07*	397.0 $\pm$ 14.50*	478.250 $\pm$ 48.700	429.6 $\pm$ 16.570	382.000 $\pm$ 10.000*
PLT $\times 10^9/D$	259.40 $\pm$ 19.93*	370.3 $\pm$ 70.33	402.000 $\pm$ 69.600	464.000 $\pm$ 52.667	375.500 $\pm$ 57.667*

Note: \* — reliability  $P < 0.05$ .

The content of red blood cells revealed significant differences between the results of the first group and the second, also the control and the first group ( $P \leq 0.05$ ). There were no significant differences in the hemoglobin content, although it is known that changes in the number of red blood cells are usually associated with changes in the level of hemoglobin. A decrease in hematocrit was found in the first group of rats compared to the control group and the second group ( $P \leq 0.05$ ), which is probably associated with a decrease in the number of red blood cells in animals of this group.

The erythrocyte indices that we have investigated allow us to estimate the red blood size in them. They characterize the cells themselves, rather than their number, so they are relatively stable parameters. Thus, the average volume of red blood cells did not have significant differences in the study groups. The average hemoglobin content in red blood cells reflects how much hemoglobin is contained on average in one red blood cell. In our study, this indicator was significantly higher in the first group of rats compared to the second group and the control. The indicator of erythrocyte saturation with hemoglobin, in contrast to MCH, does not characterize the amount of hemoglobin in the cell, but the «density» of filling the cell with hemoglobin. This indicator is significantly higher in the first group of rats than in the second and control groups. The platelet count was also significantly lower in the first group of animals that received bio correction. Thus, in the second group with the bio correction after acute poisoning, the increase in all the studied blood cell components was found: white blood cells, red blood cells, and platelets, in comparison with the first group. At the same time, erythrocyte indices: the average hemoglobin content in red blood cells, the indicator of erythrocyte saturation with hemoglobin was increased and higher than the control values. It can be considered as a compensatory reaction of the body.

When comparing the results after a sub-acute 24-day poisoning (group 3) and poisoning with subsequent correction (group 4) with infusion of common beetroot seeds in blood tests, no significant differences could be identified. However, there were tendencies for an increase in the platelet count in the third group and, to a greater extent, in the fourth group with correction compared to the control. A similar trend was observed for the average concentration of hemoglobin in erythrocytes.

By biochemical parameters, we determined liver enzymes alanine aminotransferase (ALT), aspartate aminotransferase (AST), bilirubin, glucose, urea, creatinine, and total protein (Table 2).

The first group of animals (acute) showed the highest level of changes in blood biochemical parameters in terms of the content of AST, ALT, and glucose in comparison with other groups studied (Fig. 1, 2).

Table 2

**Biochemical analysis of rat blood after acute and sub-acute poisoning with cadmium nitrate and correction with beetroot seed infusion**

Parameters	Acute poisoning 1 day, autopsy by day 10 (group 1)	Acute poisoning followed by 10 days of bio correction with infusion of <i>Beta vulgaris</i> seeds (group 2)	24 days of poisoning (group 3)	24 days of poisoning with bio correction with infusion of <i>Beta vulgaris</i> seeds (group 4)	Control (group 5)
Protein g/l	55,75±1,1	57,6±1,07	57±2	60,2±1,8*	56±2,67
Urea μmol/l	3,4±0,08	3,92±0,58	3,57±0,18	4,1±0,13	4,05±0,03
Creatinine μmol/l	61,45±6,26	57,84±3,87*	62,37±0,62	55,14±4,36	60,6±4,33
Glucose mol/l	6,48±0,26	6,38±0,31	7,6±0,1*	6,48±0,45	6,4±0,2
Bilirubin μmol/l	9,5±1,8	8,64±0,81	11±1,00	10,2±1,2	11,5±0,33

Note: \* — reliability P <0.05.

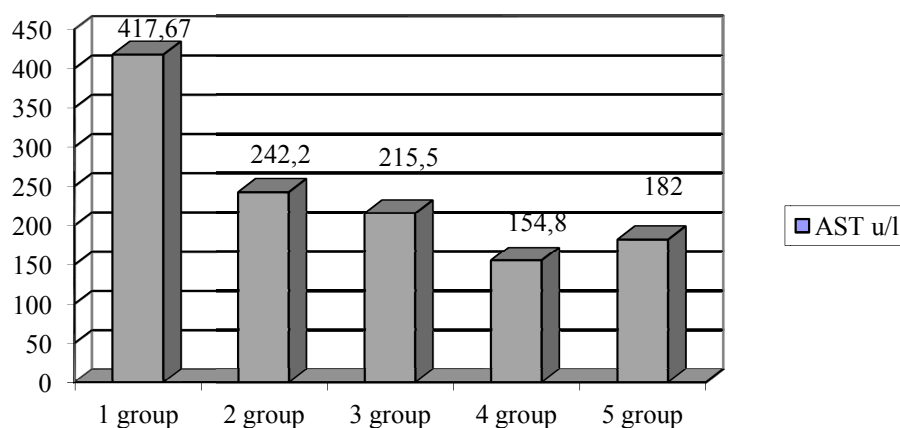


Figure 1. AST u/L

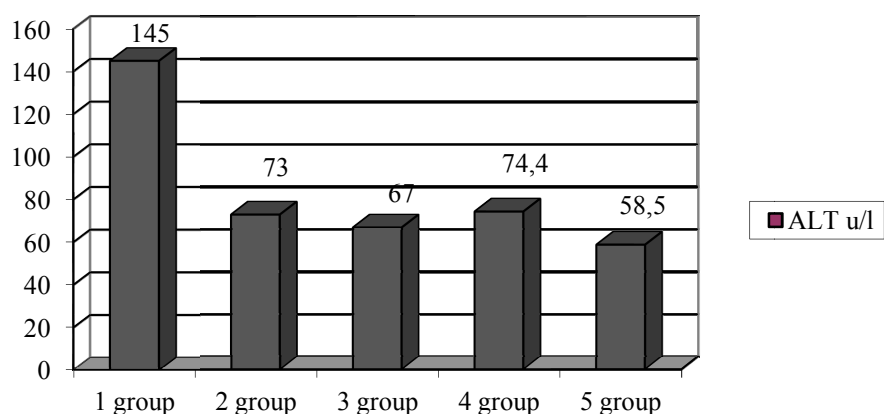


Figure 2. ALT u/L

After correction with the infusion of *Beta vulgaris* seeds in rats of the second and fourth groups, the indicators of liver enzymes significantly decreased. In the analyses of the group with acute priming with cad-

mium nitrate, AST decreased from  $417.67 \pm 45.83$  till  $242.20 \pm 27.87$  u/L, i.e. 1.7 times. Similarly, when comparing this indicator in groups 3 and 4, AST decreased by 1.4 times after biocorrection. There were small changes in urea, creatinine, and protein levels that were not reliable confirmed.

### Conclusion

As a result, our research allowed asserting that the use of *Beta vulgaris* infusion in acute and sub-acute experiments with poisoning of animals with cadmium nitrate had a positive effect on blood parameters and positive hepatoprotective effect.

### References

- 1 Lamastra L. Sewage sludge for sustainable agriculture: contaminants' contents and potential use as fertilizer / L. Lamastra, N.A. Suciù, M. Trevisan // Chem. Biol. Technol. Agril. — 2018. — Vol. 5, No. 1. — P. 10.
- 2 Khan Z.I. Assessment of trace metal and metalloids accumulation and human health risk from vegetables consumption through spinach and coriander specimens irrigated with wastewater / Z.I. Khan, I. Ugulu, K. Ahmad, S. Yasmeen, I.R. Noorka, N. Mehmood, M. Sher // Bull. Environ. Contam. Toxicol. — 2018. — Vol. 101, No. 6. — P. 787–795.
- 3 Ghosh R. Cadmium toxicity in plants: unveiling the physicochemical and molecular aspects / R. Ghosh, S. Roy // Cadmium Tolerance in Plants, Academic Press. — 2019. — P. 223–246.
- 4 Jaishankar M. Toxicity mechanism and health effects of some heavy metals / M. Jaishankar, T. Tseten, N. Anbalagan, B.B. Mathew, K.N. Beeregowda // Interdiscip. Toxicol. — 2014. — Vol. 7, No. 2 — P. 60–72.
- 5 Арустамян О.М. Вплив сполук кадмію на організм людини / О.М. Арустамян, В.С. Тканчишин, О.Ю. Алексійчук // Медицина неотложных состояний. — 2016. — Вып. 7 (78). — С. 109–114.
- 6 McCarty M.F. Zinc and multi-mineral supplementation should mitigate the pathogenic impact of cadmium exposure / M.F. McCarty // Med. Hypotheses. — 2012. — Vol. 79. — P. 642–648.
- 7 Reeves P.G. Marginal nutritional status of zinc, iron, and calcium increases cadmium retention in the duodenum and other organs of rats fed rice-based diets / P.G. Reeves, R.L. Chaney // Environ. Res. — 2004. — Vol. 96. — P. 311–322.
- 8 Larsson S.E. Effect of cadmium on skeletal tissue in normal and calcium-deficient rats / S.E. Larsson, M. Piscator // Isr. J. Med. Sci. — 1971. — Vol. 7. — P. 495–498.
- 9 Hammad T.A. Relationship between blood lead and dietary iron intake in preschool children: A cross-sectional study / T.A. Hammad, M. Sexton, P. Langenberg // Ann. Epidemiol. — 1996. — Vol. 6. — P. 30–33.
- 10 Haferburg G. Metallomics: lessons for metalliferous soil remediation / G. Haferburg, E. Kothe // Appl. Microbiol. Biotechnol. — 2010. — Vol. 87. — P. 1271–1280.

A.E. Конкабаева, А.С. Ерубай, Е. Гайбель

## Кадмий нитратымен уландырылған егеуқұйрықтардың гематологиялық көрсеткіштері және *Beta vulgaris* тұқымының тұнбасымен биокоррекциялау

Бүгінгі таңда өсімдік сығындылары мен тұнбаларын протектор ретінде ауыр металдардың әсеріне пайдалануы кезінде өсімдіктердің молекулалық механизмдерін, қорғаныс және бейімделу реакцияларын зерттейді. Мақаланың мақсаты егеуқұйрықтарды өткір және жедел кадмий нитратымен уландыру кезінде қарапайым қызылша тұқымы тұнбасының қорғаныс қасиеттерін зерттеу болды. Экспериментте біз 50 еркек егеуқұйрықты қолдандық. Cd нитратына ұшыраған егеуқұйрықтардың бастапқы салмағы  $180 \pm 30$  г болатын. Егеуқұйрықтардың бір тобына кадмий нитраты  $0,1$  г/л дозада ішастарішіне енгізілді, екінші тобы  $0,01\%$  кадмий нитратының ерітіндісін  $1$  мл-ден аптаның  $5$  күнінде ауыз арқылы  $10$  және  $24$  күннің аралығында ішті. Егеуқұйрықтардың жалпы қан анализі және биохимиялық көрсеткіштері зерттелді. Биохимиялық параметрлер бойынша бауыр ферменттері аланинаминотрансфераза (АЛАТ), аспартатаминотрансфераза (АСАТ), билирубин, глюкоза, несепнәр, креатинин және жалпы ақуыз анықталды. Топтар арасындағы айырмашылықтардың маңыздылығын анықтауда әр топ үшін  $\pm$  SEM орташа мәні есептелді. Әр параметр біржақты дисперсиялық талдау (ANOVA) тестін қолдана отырып бөлек талданды. Топтар арасындағы айырмашылықты анықтау үшін t-критерий Стьюденті қолданылды. Зерттеулер лейкоциттер, эритроциттер және тромбоциттер көрсеткіштері бойынша уландырылу және биокоррекция күндерінің ұзақтығына байланысты өзгермелі екенін көрсетті. Несепнәр, креатинин және ақуыз мөлшері бойынша шамалы өзгерістер байқалды, олардың нәтижелері сенімді расталмаған. Жүргізілген зерттеулер нәтижесінде кадмий нитратымен жануарлардың тұқымымен өткір және жедел тәжірибелерде қарапайым қызылша тұнбасын қолдану оң гепатопротекторлық әсерге ие екенін көруге болады.

*Кілт сөздер:* кадмий нитраты, *Beta vulgaris* тұқымының тұнбасы, гематологиялық көрсеткіштер, биохимиялық анализ, биокоррекция.

А.Е. Конкабаева, А.С. Ерубай, Е. Гайбель

## Гематологические показатели у крыс при затравке нитратом кадмия и биокоррекции настоем семян *Beta vulgaris*

На сегодняшний день, используя растительные экстракты и настои в качестве протекторов при воздействии тяжелых металлов, исследуют молекулярные механизмы, защитные и адаптивные реакции растений. Целью статьи явилось изучение протекторных свойств настоя семян свеклы обыкновенной при острой и подострой затравке крыс нитратом кадмия. В эксперименте мы использовали 50 самцов крыс. Животные подвергались воздействию нитрата Cd, с изначальным весом  $180 \pm 30$  г. Одним группам крыс вводили нитрат кадмия в дозе 0,1 г/л внутрибрюшинно, вторые группы получали 0,01 % раствор нитрата кадмия по 1 мл 5 дней в неделю орально в течение 10 и 24 дней. Были исследованы следующие параметры: общий анализ крови и биохимические показатели у крыс. По биохимическим параметрам определяли ферменты печени аланинаминотрансфераза (АЛАТ), аспаргатаминотрансфераза (АСАТ), билирубин, глюкоза, мочевины, креатинин и общий белок. Для каждой группы рассчитывали средние значения  $\pm$  SEM, чтобы определить значимость межгрупповых различий. Каждый параметр анализировали отдельно с использованием теста одностороннего дисперсионного анализа (ANOVA). Для определения разницы между группами использовали t-критерий Стьюдента. Исследования показали наличие вариаций по показателям лейкоцитов, эритроцитов и тромбоцитов в зависимости от продолжительности дней затравки и биокоррекции. По содержанию мочевины, креатинина и белка отмечались небольшие сдвиги, которые не имели достоверных подтверждений. Проведенные нами исследования позволили утверждать, что применение настоя свеклы обыкновенной в острых и подострых экспериментах с затравкой животных нитратом кадмия имело положительное гепатопротекторное действие.

**Ключевые слова:** нитрат кадмия, настой семян *Beta vulgaris*, гематологические показатели, биохимический анализ, биокоррекция.

### References

- 1 Lamasra, L., Suci, N.A., & Trevisan, M. (2018). Sewage sludge for sustainable agriculture: contaminants' contents and potential use as fertilizer. *Chem. Biol. Technol. Agril.*, 5(1), 10.
- 2 Khan, Z.I., Ugulu, I., Ahmad, K., Yasmeen, S., Noorka, I.R., Mehmood, N., & Sher, M. (2018). Assessment of trace metal and metalloids accumulation and human health risk from vegetables consumption through spinach and coriander specimens irrigated with wastewater. *Bull. Environ. Contam. Toxicol.*, 101 (6), 787–795.
- 3 Ghosh, R., & Roy, S. (2019). Cadmium toxicity in plants: unveiling the physicochemical and molecular aspects. *Cadmium Tolerance in Plants, Academic Press*, 223–246.
- 4 Jaishankar, M., Tseten, T., Anbalagan, N., Mathew, B.B. & Beeregowda, K.N. (2014). Toxicity mechanism and health effects of some heavy metals. *Interdiscip. Toxicol.*, 7 (2), 60–72.
- 5 Arustamyan, O.M., Tkanchishin, V.S., & Aleksyichuk, O.Yu. (2016). Vplyv spoluk kadmiyu na orhanizm lyudyny [Influence of cadmium compounds on the human body]. *Meditsina neotlozhnykh sostoianni — Medicine of urgent conditions*, 7 (78), 109–114 [in Ukrainian].
- 6 McCarty, M.F. (2012). Zinc and multi-mineral supplementation should mitigate the pathogenic impact of cadmium exposure. *Med. Hypotheses*, 79, 642–648.
- 7 Reeves, P.G., & Chaney, R.L. (2004). Marginal nutritional status of zinc, iron, and calcium increases cadmium retention in the duodenum and other organs of rats fed rice-based diets. *Environ. Res.*, 96, 311–322.
- 8 Larsson, S.E., & Piscator, M. (1971). Effect of cadmium on skeletal tissue in normal and calcium-deficient rats. *Isr. J. Med. Sci.*, 7; 495–498.
- 9 Hammad, T.A., Sexton, M., & Langenberg, P. (1996). Relationship between blood lead and dietary iron intake in preschool children: A cross-sectional study. *Ann. Epidemiol.*, 6, 30–33.
- 10 Haferburg, G., & Kothe, E. (2010). Metallomics: lessons for metalliferous soil remediation. *Appl. Microbiol. Biotechnol.*, 87, 1271–1280.